

FMRC(M)6000 new

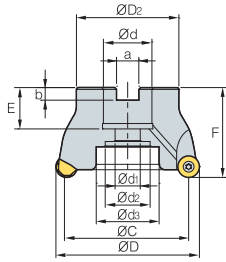


Fig. 1

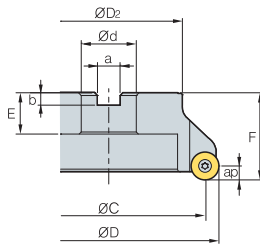


Fig. 2

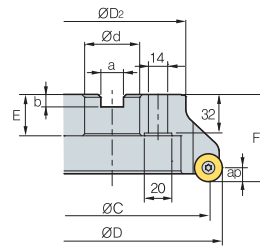


Fig. 3

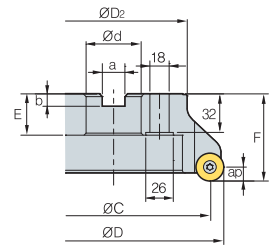


Fig. 4

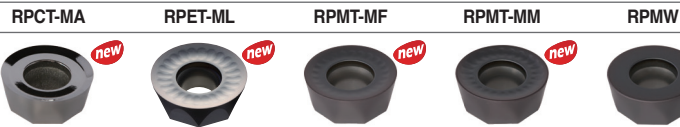


• AR: 5°
• RR: 0°

Designation		ØD	ØC	ØD ₂	Ød	Ød ₁	Ød ₂	Ød ₃	a	b	E	F	ap	kg	Fig.	Insert size	
FMRCM	6063HRP-4	4	63	43	50	22	11	18	-	10.4	6.3	20	40	10	0.37	1	20
FMRC	6080HRP-5	5	80	60	57	25.4 (27)	14	25	35	9.5 (12.4)	6 (7)	24 (23)	50	10	0.87	1	20
FMRCM	6100HRP-5	5	100	80	67	31.75 (32)	18	26	42	12.7 (14.4)	8 (8)	32 (25)	63 (55)	10	1.31	1	20
	6100HRP-6	6	100	80	67	31.75 (32)	18	26	42	12.7 (14.4)	8 (8)	32 (25)	63 (55)	10	1.40	1	20
	6125HRP-5	5	125	105	87	38.1 (40)	22	32	52	15.9 (16.4)	10 (9)	35 (29)	68 (63)	10	2.77	1	20
	6125HRP-7	7	125	105	87	38.1 (40)	22	32	52	15.9 (16.4)	10 (9)	35 (29)	68 (63)	10	2.89	1	20
	6160RP-6	6	160	140	107	50.8 (40)	-	-	100	19 (16.4)	11 (9)	38 (32)	63	10	3.58	2 (3)	20
	6160RP-8	8	160	140	107	50.8 (40)	-	-	100	19 (16.4)	11 (9)	38 (32)	63	10	3.53	2 (3)	20
	6200RP-8	8	200	180	130	47.625 (60)	-	-	132	25.4 (25.7)	14 (14)	38	63	10	5.15	4	20
	6250RP-9	9	250	230	180	47.625 (60)	-	-	180	25.4 (25.7)	14 (14)	38	63	10	9.72	4	20

() Metric size

Available inserts



Designation	Cermet		Coated										Uncoated		page			
	CN2000	CN30	NCM625	NC5330	NCM635	NCM645	PC2505	PC2510	PC3600	PC3700	PC6510	PC9530	PC9540	PC5300		PC5400	ST30A	H01
RPCT 2007M0-MA																		●
RPET 2007M0E-ML														●	●			
RPMT 2007M0E-MF									●					●	●			
2007M0S-MM							●	●	●	●				●	●			
RPMW 2007M0S1							●	●	●					●	●			

Available arbors

Designation	Ød	Available arbors	Designation	Ød	Available arbors
FMRCM 6063HRP-4	22	BT□□-FMC22-□□	FMRC (FMRCM) 6125HRP-7	38.1	BT□□-FMA38.1-□□
FMRC 6080HRP-5	25.4	BT□□-FMA25.4-□□		40	BT□□-FMC40-□□
FMRCM 6100HRP-5	27	BT□□-FMC27-□□	6160RP-6	50.8	BT□□-FMA50.8-□□
	31.75	BT□□-FMA31.75-□□		40	BT□□-FMC40-□□
6100HRP-6	32	BT□□-FMC32-□□	6160RP-8	50.8	BT□□-FMA50.8-□□
	31.75	BT□□-FMA31.75-□□		40	BT□□-FMC40-□□
6125HRP-5	32	BT□□-FMC32-□□	6200RP-8	47.625	BT□□-FMA47.625-□□
	38.1	BT□□-FMA38.1-□□		60	BT□□-FMC60-□□
	40	BT□□-FMC40-□□	6250RP-9	47.625	BT□□-FMA47.625-□□
				60	BT□□-FMC60-□□

Parts

Specification	Screw	Wrench
Ø63~Ø250	FTKA0615-P	TW25-100

Available inserts E16 Available arbors and bolt E400~E402